



Mobile 2-post lift

FHB3500-DC01

article no.: FHB3500-DC01

Mobile lift, capacity 3500 kg, battery driven, lifting height 194 cm, symmetric swivel arms, drive-in width 2300 mm, electro-hydraulic drive.

Please adhere to the lifting points prescribed by the vehicle manufacturer and check the suit-



Mobile 2-post lift
FHB3500-DC01

able load supports, the dimensions and the swivelling range of the swivel arms.

**specifications**

| | | |
|--------------------------|---|---|
| article no. | | FHB3500-DC01 |
| load support | load support | 4 swivel arms, symmetric |
| | capacity | 3.5 t |
| | length of swivel arm at front, minimum (mm) | 560 mm |
| | length of swivel arm at front, maximum (mm) | 1300 mm |
| | length of swivel arm at rear, minimum (mm) | 560 mm |
| | length of swivel arm at rear, maximum (mm) | 1300 mm |
| | distance between supports, maximum | 2950 mm |
| | load pad Ø | 120 mm |
| lifting height | lifting stroke effective | 1800 mm |
| | lifting height | 1940 mm |
| | minimum support height (mm) | 120 mm |
| | height adjustment of load pad | 40 mm |
| speed | lifting time | 40 sec. |
| | lowering time (under load) | 40 sec. |
| drive | mode of drive | electro-hydraulic |
| | motor | DC voltage |
| | motor power (kW) | 2.2 KW |
| power supply | type of power supply | battery-powered |
| | type of battery | deep cycle, maintenance-free |
| | lift cycles at full load | 20 |
| | battery capacity | 80 Ah |
| | total battery voltage | 24 V |
| | length of charging cable | 1 m |
| | charging concept | integrated charger |
| | charging voltage | 230 V |
| | frequency of power supply | 50 Hz |
| | charging time | 8 h |
| operation | mode of operation | 1 central control unit |
| | control | electronic |
| regularisation | synchronisation | master-slave cylinder system |
| travelling device | travelling device | 2 front wheels, 1 detachable wheel handle at rear |
| | ground clearance at front | 20 mm |
| | ground clearance at rear | 90 mm |
| load securing | load securing | hydraulic and mechanical |
| dimensions | length | 2960 mm |
| | width | 3350 mm |
| | height | 750 mm |
| | drive-in width | 2300 mm |
| weight | | 1350 kg |
| protection class | | IP54 |
| surface treatment | type of surface treatment | powder coating |
| | colour | orange RAL2004 / grey RAL7015 |



accessories



FHB3500-Z-LS01
support set for Sprinter



FHB3500-Z-LS02
support set for Crafter, TGE



FHB3500-Z-P01
PIN supports



FHB3500-Z-V01
U/V supports



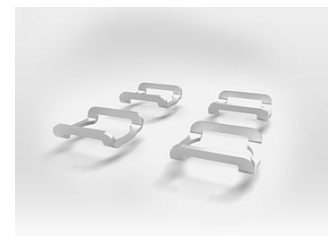
FHB3500-Z-LA100
2 extension tubes, 100 mm



FHB3500-Z-LA200
2 extension tubes, 200 mm



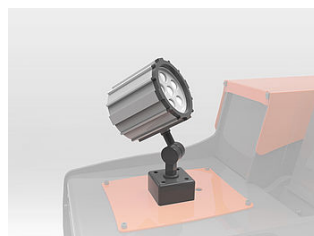
FHB3500-Z-LA300
2 extension tubes, 300 mm



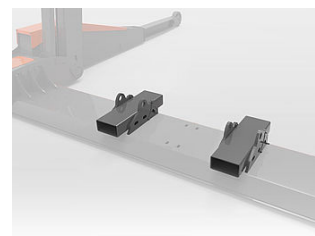
FHB3500-Z-UG
U-guidances for rubber pads



FHB3500-Z-RP01-4
rubber pads, height 100 mm



FHB3500-Z-SPOT01
LED spot light, 12 W, 24V



FHB3500-Z-FLP
fork lift pockets



FHB3500-Z-TR03
2 cross beams, 3,5 t, length
2826 mm / 2566 mm



FHB3500-Z-FA3
2 platforms, 2.75 t, length 3.5
m, to drive-on with cars



FHB3500-Z-FATORO
4 wheel support plates, 2.75 t,
individually adjustable, for
mowing machines and tractors



FHB3500-Z-PR232
2 rectangular tubes to lift at the
front legs, 1.5 t, for pallet trucks
and stackers