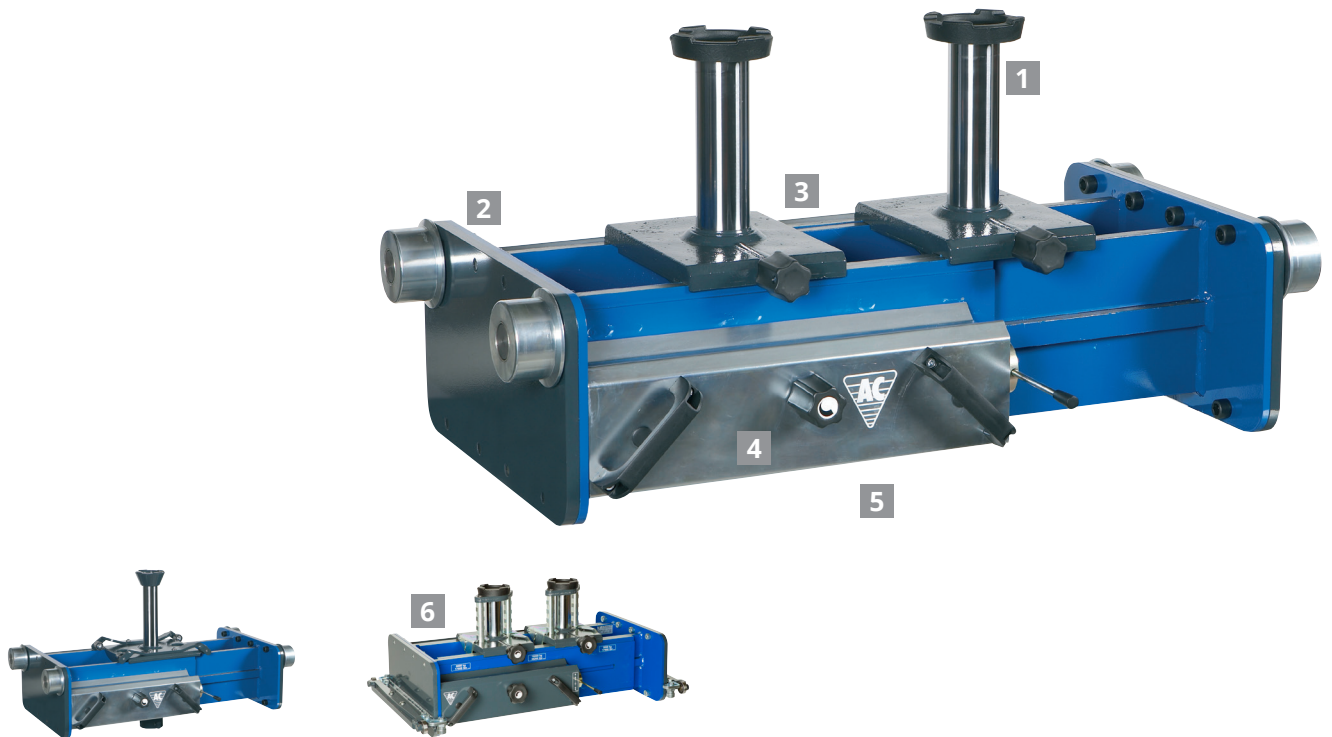


# HEAVY DUTY JACKING BEAMS THE PROFESSIONAL'S CHOICE



A rapid and precise air hydraulic unit with high speed ram travel that will save you time and boost your efficiency.



MODELS

**FL-1**

**FL-2M**

**FL-2**

AUTOMATIC MECHANICAL SAFETY LOCK

## KEY FEATURES

### 1 FAST, PRECISE & RELIABLE

The rapid and precise air hydraulic unit with high speed ram travel saves time and boosts efficiency

### 2 A PERFECT FIT

The unique support arm system and flexible frame construction guarantees a perfect fit to any lift

### 3 TRAVERSING RAM

The transversely movable rams offer optimum reach and weight distribution for every lift

### 4 OPTIMUM SAFETY

Dead man's release and built-in overload valve for optimum safety. Automatic safety locking is optional.

### 5 SAVES TIME & REDUCES STRAIN

Control panel at ergonomical working height saves time and reduces the strain for the operator

### 6 MECHANICAL SAFETY LOCK

Extra automatic and instant protection against unintentional lowering (only FL-2M - cannot be retrofitted)

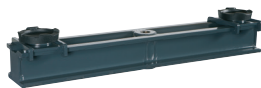
### ✓ MADE IN DENMARK

Built to the highest quality standards which guarantees you a safe and efficient operation and long lifecycle





# OPTIMIZE WITH ACCESSORIES



## **T4** CROSS BEAM ADAPTOR 20t

Ideal for supporting axles, whilst working on the differential gear. Two adjustable lifting saddles. Fits FL-2 and FL-2M



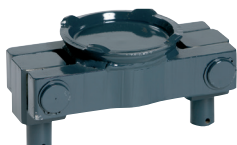
## **T5** CROSS BEAM ADAPTOR 15-11,5t

Ideal for supporting axles, whilst working on the differential gear. Increases stability and offers adjustable width. Fits FL-2 and FL-2M



## **T6** CROSS BEAM ADAPTOR 13t

Ideal for inspection centres. Easy and precise adjustment of lifting saddles from the pit. Fits FL-2 and FL-2M



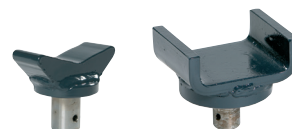
## **LB** DIFF BEAM 20t

Ideal for heavy duty lifting with one lifting point. Allows 2 rams to lift at one point with combined capacity. Fits FL-2 and FL-2M



## **FLTR** TROLLEY

Helps swift mounting/dismounting of heavy duty jacking beams on lifts



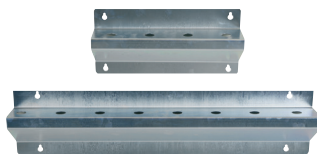
## **FW2 / US** SADDLE 10t

Essential for lifting under various axle profiles (V-saddle) and lifting various chassis profiles (U-saddle)



## **FG100 / FG200** EXTENSION 10t

Essential for flexibility. Increases the lifting height by 100 mm or 200 mm



## **VB1 / VB2** WALL BRACKET

Increases efficiency by organizing your extensions and saddles on the wall

## VISIT OUR WEBSITE FOR DETAILS



For more details and an easy accessory guide please go to [www.ac-hydraulic.dk/en/products/heavy-duty-jacking-beams/](http://www.ac-hydraulic.dk/en/products/heavy-duty-jacking-beams/)