



WORLD LEADING JACKING BEAMS

Trust the world's most sold jacking beams to deliver quick and efficient lifting every time.



MODELS	SD20L/SD26L	SD20PHL-A/SD26PHL-A	SD20PHL/SD26PHL/SD32PHL/SD40PHL
	HAND HYDRAULIC	AUTOMATIC AIR HYDRAULIC	AIR HYDRAULIC

KEY FEATURES

1 FAST, PRECISE & RELIABLE

You can rely on the high quality hydraulic unit to deliver fast and precise lifting every time

2 UNIQUE SUPPORT ARM SYSTEM

The unique height adjustable support arm system guarantees a perfect match for your individual pit or lift

3 FLEXIBLE REACH

The flexible top support beam with lifting extensions ensures a perfect fit under the vehicle

4 OPTIMUM SAFETY

Dead man's release, automatic safety locking device and built-in overload valve for optimum safety

5 AUTOMATIC CONTROL

Individual joysticks control of lifting arms and remote controlled lowering and retraction of arms (PHL-A models)

6 EXTENSIONS INCLUDED

Supplied with extension sets (all models) and rubber cushion for protection of car body (except SD40PHL)

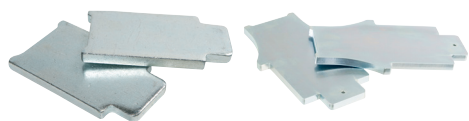
MADE IN DENMARK

Built to the highest quality standards which guarantees you a safe and efficient operation and long lifecycle





OPTIMIZE WITH ACCESSORIES



FSD1 / FSD4 EXTENSIONS

Extensions for lifting various chassis profiles, increases the lifting height by 130 / 210 mm. FSD4 is perfect for SUVs. Does not fit SD40 PHL



FSD5 SADDLE WITH SPINDLE 2 t

Easy fine adjustment of the lifting height for a stable and symmetrical lift. Increases the lifting height by 106-235 mm. Does not fit SD32/SD40



FSD6 ADJUSTABLE SADDLE 2 t

Easy fine adjustment of the lifting height for a stable and symmetrical lift. Increases the lifting height by 32-92 mm. Does not fit SD40 PHL



FSD7 EXTENSION

Extension for FSD6 saddle, increases the lifting height by 60 mm. Does not fit SD40 PHL



FW SADDLE 10 t

Essential for for lifting under bolts, differential gear etc. Fits SD40 PHL only.



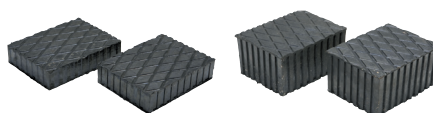
FW1 V-SADDLE 10 t

Essential for for lifting under various axle profiles . Fits SD40 PHL only.



FW3 SADDLE WITH CUSHION

Saddle with rubber cushion for protection of the car body. Fits SD40 PHL only.



FSD2 / FSD3 RUBBER SUPPORT

Blocks for stability and protection of the car body during lifting, 40 / 80 mm high



GS1 RUBBER CUSHION

Protects the car body during lifting, fits FSD5 and FSD6 saddles



GS2 RUBBER CUSHION

For protection of the car body during lifting. Fits FSD1 and FSD4 saddles. Extends lifting height by 10 mm. Does not fit SD40 PHL



HSD / HSD-A AIR-LINE CONNECT.

All you need for a swift air-line connection

VISIT OUR WEBSITE FOR DETAILS



For more details and an easy accessory guide please go to www.ac-hydraulic.dk/en/products/jacking-beams/