

# RAPID AND PRECISE TRANSMISSION JACKS FOR HANDSFREE OPERATIONS



Rapid and precise transmission jacks for professional use will save you time and boost your efficiency.

Extremely stable and optimum manoeuvrability even with maximum load.



MODELS **VL3 / VL6 / VL10**

**VLT12**

**VLT6**

PNEUMATICALLY CONTROLLED HIGH SPEED

## KEY FEATURES

### 1 RAPID AND PRECISE

High quality hydraulic unit secures rapid and precise lifting of fuel tanks, transmissions, exhaust pipes e.g.

### 2 HANDSFREE WITH HIGH-SPEED

Pedal operated leaving both hands free for working. VLT-models have built-in high speed

### 3 EXTREMELY STABLE

Sturdy swivel castor wheels for optimum stability and manoeuvrability VLT6 offers the best stability on the market due to 5-legged construction

### 4 OPTIMUM SAFETY

With built-in safety valve and dead man's release for optimum safety whilst lifting and lowering

### 5 LONG LIFE CYCLE

Hard chromium plated rams and high quality strength steel frame guarantees a long product lifecycle

### 6 PERFECT FOR TRANSMISSIONS

Transmission saddle plate for dismounting and re-mounting of gearboxes

### ✓ MADE IN DENMARK

Built to the highest quality standards which guarantees you a safe and efficient operation and long lifecycle





# OPTIMIZE WITH ACCESSORIES



## AS1 GEARBOX SADDLE

0,5 t

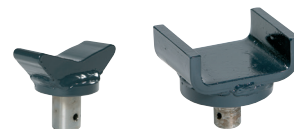
Perfect match for gearboxes. Tilts 10° in all directions for easy and accurate dismounting and re-mounting



## AS3 GEARBOX SADDLE

1 t

Perfect match for gearboxes. Tilts 10° in all directions for easy and accurate dismounting and re-mounting



## FW2 / US SADDLE

10 t

Essential for lifting under various axle profiles (V-saddle) and lifting various chassis profiles (U-saddle)



## S SADDLE

For lifting under mounting springs, fuel tanks, exhaust pipes etc.



## GS1 RUBBER CUSHION

Fits the S saddle and protects the car body during lifting



## FB STRUT SUPPORT

Supports and holds the suspension strut when working on the wheel suspension



## UB15 BRACKET AND LIQUID TUB

Special bracket for hands free oil drain. Hinged tilt function for easy emptying and allocated space for tools, screws and small parts

## VISIT OUR WEBSITE FOR DETAILS



For more details and an easy accessory guide please go to [www.ac-hydraulic.dk/en/products/transmission-jacks/](http://www.ac-hydraulic.dk/en/products/transmission-jacks/)