

Altus — Test Lane L601 —

The L601 is the Altus® modular analogue/digital display for test lanes. Multiple configurations of floor units, peripherals and accessories can be connected to create a test lane for passenger cars and light commercial vehicles exactly adapted to the needs and possibilities in your workshop. The L601 comprises the latest micro-processor technology. It is designed in such a way that all electronics are inside the read-out unit. Therefore, no separate relay boxes necessary!

Combo®



(Standard for 4x4 testing)

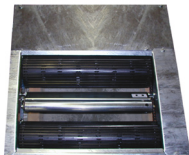
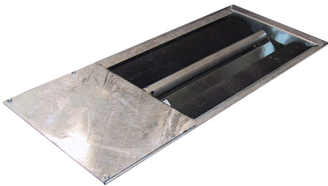
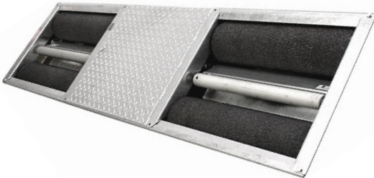


Sideslip Meter



Roller Brake Tester

(Standard for 4x4 testing)



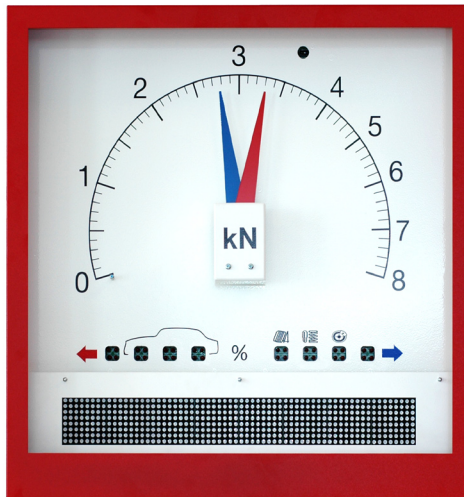
Suspension Analyser



L601 standard features

- Infra-red remote control hand set.
- Brake difference indication left/right per axle.
- Digital sideslip- and suspension results for front- and rear axle.
- Memory for storage of test results for service- and parking brake.
- Wheel lock indication lamps for left and right.
- Brake efficiency calculation for service- and parking brake after manual weight input, or automatic weighing with a suspension analyser or weighing system.
- Recalling off all values and brake efficiencies.
- 4x4 reversible roller kit.
- Ovality & rolling resistance measurement.
- Wall bracket included.

L601



Display dimensions: 635 x 635 x 210 mm

Analogue display

Contains a large concentric 42cm diameter scale for the brake forces of the left and right wheel of an axle. The red pointer represents the left wheel, the blue pointer represents the right wheel.

Software

- Fully automatic test program

Digital display

Contains a large digital LED display for a clear presentation of all numerical values for sideslip, suspension, brake forces, differences left/right and brake efficiencies.

Display options

- Pivoting wall bracket
- Pedestal
- Printer drawer
- Matrix printer
- Inkjet printer

Technical specifications are subject to changes without notice.

Specifications of floor modules, display and options, available upon request.