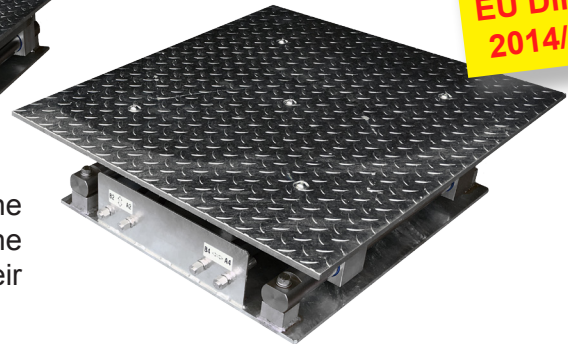
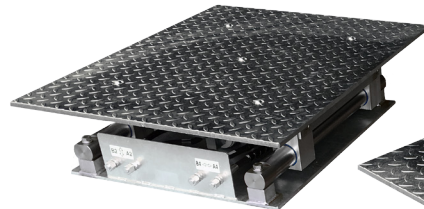


ESCON HYDRAULIC TRUCK PLAY DETECTOR



The ESCON hydraulic play detector for heavy vehicles is designed to check quickly and efficiently most steering and suspension components. It lets a technician detect play and wear in the wheel guiding and steering parts. The play detector consists of an hydraulic power control unit with control lamp and two moving platforms, each with a hot dip zinc chequered plate. Each platform is actuated by two hydraulic cylinders. The control lamp contains four (**PD5810, PD5815**) or eight (**PD5820, PD5830**) buttons. Both the control lamp with cable (**PD5810, PD5820**) and a wireless RF control lamp (**PD5815, PD5830**) are available. A set of floor frames is optional but recommended.

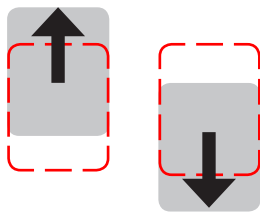


Meets the
EU Directive
2014/45/EU

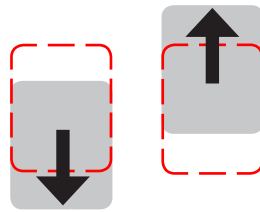
Pressing a key on the control lamp causes a movement in the indicated direction. The platforms keep moving as long as the button is pressed, or until they have reached the end of their stroke. The platforms stop when the button is released.

Movements platforms PD5810 & PD5815

FRONT/REAR movement



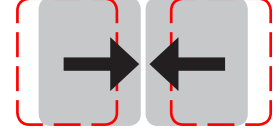
REAR/FRONT movement



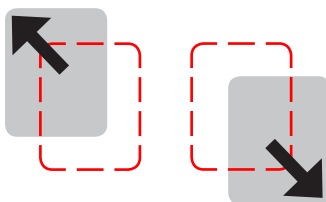
LEFT/RIGHT movement



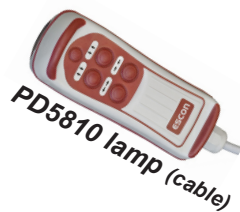
RIGHT/LEFT movement



DIAGONAL movement



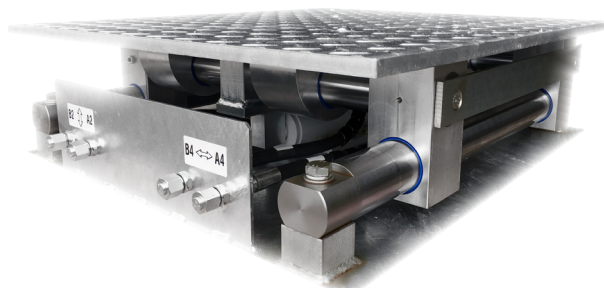
A diagonal movement is performed when a Front or Rear key is pressed simultaneously *with* a Left or Right key.



Movements platforms PD5820 & PD5830

All movements PD5810 & PD5815 +

- Anti-fuse movements
- Automatic mode
- Independent movement left/right platform



PD5815-PD5830 lamp (RF)

Specifications

- Operation: *Electro-hydraulic*
- Maximum axle load/wheel load: *20 ton / 10 ton (drive over)*
- Maximum working pressure: *180 bar*
- Maximum horizontal force/plate: *30 kN*
- Longitudinal/transversal movement: *100 mm*
- Movement speed: *70 mm/sec*
- Cable length: *6,5 m (PD5810, PD5820)*
- Dimensions platforms: *950 x 800 x 217 mm (L x W x H)*
- Dimensions hydraulic unit: *360 x 300 x 875 mm (L x W x H)*
- Motor: *4 kW, 3PH+N+E 400V / 50Hz*

Technical specifications are subject to changes without notice.

Escon PD5810-15-20-30 GB 20180401

ALTESCO, Altus-Escon-Company BV, Drachmeweg 26, NL-2153PA Nieuw Vennepe, Netherlands.
Phone: +31 (0)88 ALTESCO, +31 (0)88 2583700, Fax: +31 (0)88 2583790, www.escon-test.com, info@escon-test.com

ESCON