

Mobile column

EHB905V11DC-FEX wireless

article no.: EHB905V11DC01-H-FEX

Mobile column EHB905V11DC-FEX with a capacity of 5.5 t each. Especially designed for vehicles with inboard wheels such as motorhomes or vehicles with a large superstructure having an axle weight of more than 6 tons and up to 11 tons. A lift set is composed of maximum 10 columns:



Mobile column

EHB905V11DC-FEX wireless

PAGE 2/5

- set of 4 columns consisting of 4 identical columns: 4 x EHB905V11DC01-H-FEX (4 x 5.5 t = 22 t)
- set of 6 columns consisting of 6 identical columns: 6 x EHB905V11DC01-H-FEX (6 x 5.5 t = 33 t)



specifications

article no.		EHB905V11DC01-H-FEX
lifting unit	type of columns	all columns identical
	quantity of columns	1
	quantity of columns, maximum	10
load support	load support	adjustable wheel fork
	capacity per column	5.5 t
	wheel size Ø minimum (mm)	550 mm
	wheel size Ø maximum (mm)	1140 mm
	length of fork (mm)	500 mm
lifting height	lifting stroke effective	1750 mm
	lifting height	1850 mm
	frame height at front (mm)	100 mm
speed	lifting time	70 sec.
	lowering time (under load)	70 sec.
drive	mode of drive	electro-hydraulic
	motor	DC voltage
	motor power per column (kW)	2.2 KW
power supply	type of power supply	battery-powered
	type of battery	deep cycle, maintenance-free
	battery capacity per column	80 Ah
	lift cycles at full load	25
	fuse, per column (Amps)	2.5 A
	total battery voltage	24 V
	length of charging cable	10 m
	charging concept	EasyCharge
	charging voltage	230 V
	frequency of power supply	50 Hz
charging time	8 h	
communication		communication via radio, wireless
operation	mode of operation	operation at each column
	activation	all, individual, pair
	control	electronic
	Softstart	X
regularisation	synchronisation	proportional valves, infinitely variable
travelling device	travelling device	at each column
	travelling device at front	2 front wheels, fixed
	travelling device at rear	1 wheel handle, spring-loaded, self-lowering under load
	ground clearance at front	15 mm
	ground clearance at rear	35 mm
load securing	load securing	hydraulic and mechanical
dimensions	length	1350 mm
	width	1165 mm
	height	2255 mm



Mobile column
EHB905V11DC-FEX wireless

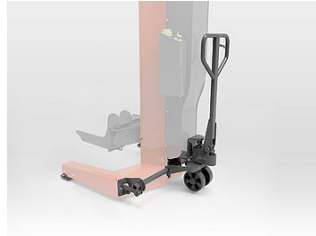
	height of fork (mm)	100 mm
weight	weight per column (kgs)	575 kg
protection class		IP54
surface treatment	type of surface treatment	powder coating
	colour	orange RAL2004 / grey RAL7015



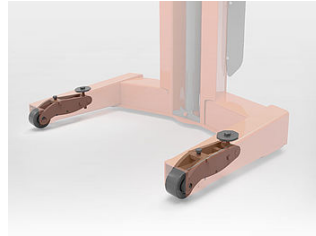
accessories



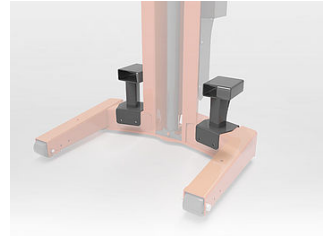
EHB907DC01-H-VZ
Hot galvanisation per column E-HB90xDC



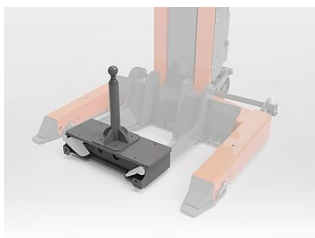
EHB907TDH
hydraulic pallet jack



EHB907TDA
front wheels height adjustable



EHB907FLP
Forklift pockets



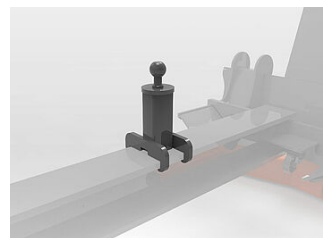
EHB906BCS
Support for ball coupling



EHB90XTR113000
Crossbeam, 11 t, length 3000 mm



EHB90XTR113500
Crossbeam, 11 t, length 3500 mm



EHB-TR-BC
ball coupling



HS08LR
support stand, 8.2 t, 1260-1990 mm



MS08LR
support stand, 8.2 t, 790-1270 mm