

HIGH PERFORMANCE LIFTING EQUIPMENT

BRITISH
ENGINEERING.
MADE TO LAST.

Major
lift

HYDRAULIC
EQUIPMENT



FM 22284



FOR TRUCKS AND BUSES

MAJORLIFT... Leading the way



**Majorlift are
the market leaders
in the manufacture
of a complete
range of hydraulic
garage equipment
for the truck, bus
and plant industry.**



See website for terms and conditions



RELIABILITY AND PERFORMANCE

Every Majorlift product is built at our high tech factory in Gloucestershire, UK with 95% of all parts being manufactured in-house. This enables us to control quality at all stages of production.

Our products have been in the workplace for many years and proven their reliability in a large range of demanding applications.

As a result, we are quality approved to ISO 9001:2015 standard and we conform to machinery directive 2006/42/EC.



SAFETY

Safety is our highest priority. With that in mind, we build into all our products as standard, pressure relief valves to prevent overloading, hose burst valves to avoid accidental lowering and we incorporate locking collars and threaded rams on our 12 - 40 tonne pit jacks.



FLEXIBILITY

Whilst we have a standard product range, we are flexible enough to react to customers requests for something out of the ordinary. Many of our current products have, in fact, been designed in that way.

SUPPORT

Our expert team will initially help you make sure you have the right tool for your job and provide a spares and service back-up to keep your equipment performing at peak efficiency for many years to come.



PIT JACKS

Control valves give precise and controlled lowering

Twin rams give extra stability and slide transversely in the frame making precise positioning under the vehicle possible. For increased safety, rams are threaded with locking collars. Rams are treated with a surface engineered process for increased working life.

Pressure relief valve prevents overloading

Available in air/hydraulic or manually operated versions rated at 12, 20 and 40 tonnes.

Standard accessories include

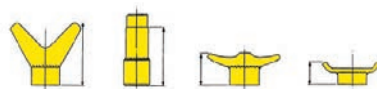
Each commercial pit jack and commercial lift mounted jacking beam is supplied complete with a full set of slip-on adaptors to assist in jacking axles, diffs and chassis etc.

4101 V head height 165mm - 2 off

4102 Dished head height 89mm - 2 off

4103 Chassis head height 54mm - 2 off

4105 Extension tube shoulder height 152mm - 2 off



**PIT JACK
RATED UP TO
40
TONNES**

All new jacking beams now fitted as standard with handles and accessory rack. These can be retrofitted to your existing beam or the accessory rack can be wall mounted.

2626 Accessory rack

2625 Handles



Spring loaded rollers for easy movement along pit wall

Hose burst valves enhance operator safety

Originally designed to meet the demanding requirements of safely lifting aircraft ground-handling tugs, our 40-tonne rated jack offers all the performance and safety features of the smaller 20-tonne range - and is ideal for seriously heavyweight applications such as military, quarry, mining and railway vehicles.



Two 20-tonne rated rams deliver the lifting power which is controlled through air/hydraulics to provide two lifting speeds, with positive mechanical locking (preventing accidental lowering) for enhanced safety.

Accessories for 40-tonne pit jack

4111 Serrated saddle 2 off

4112 V crutch, height 170mm 2 off

4113 Dish crutch, height 75mm 2 off

4114 Chassis crutch, height 80mm 2 off

4115 Extension tube, shoulder height 150mm 2 off

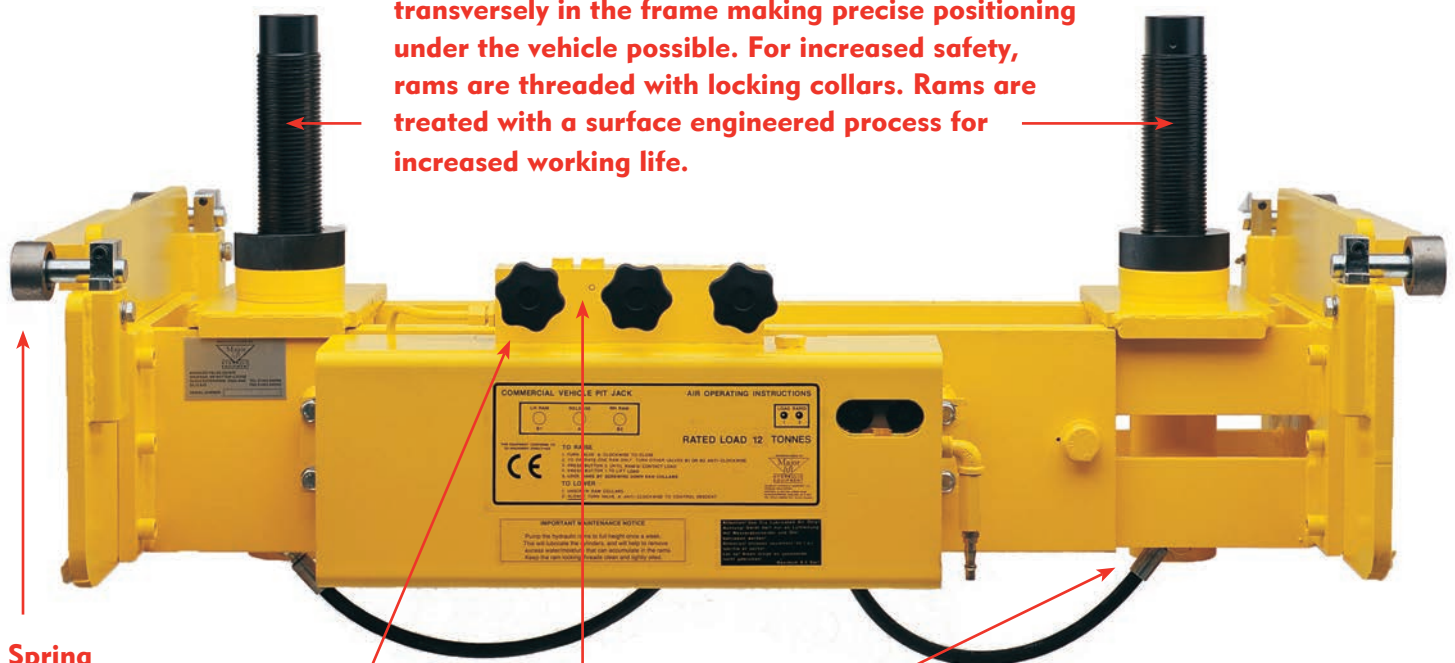
LIFT MOUNTED BEAMS



COMMERCIAL LIFT JACKING BEAMS

These beams are also available in air/hydraulic or manually operated versions rated from 8 to 20 tonnes depending on the lift capacity.

Twin rams give extra stability and slide transversely in the frame making precise positioning under the vehicle possible. For increased safety, rams are threaded with locking collars. Rams are treated with a surface engineered process for increased working life.



Spring loaded rollers for easy movement along lift

Control valves give precise and controlled lowering

Pressure relief valve prevents overloading

Hose burst valves enhance operator safety

- > To suit all makes of commercial lift
- > Sliding frame, when required, allows width to be easily adjustable to enable servicing of vehicles with different track widths
- > Incorporates all safety features of pit jacks

PIT JACK ACCESSORIES

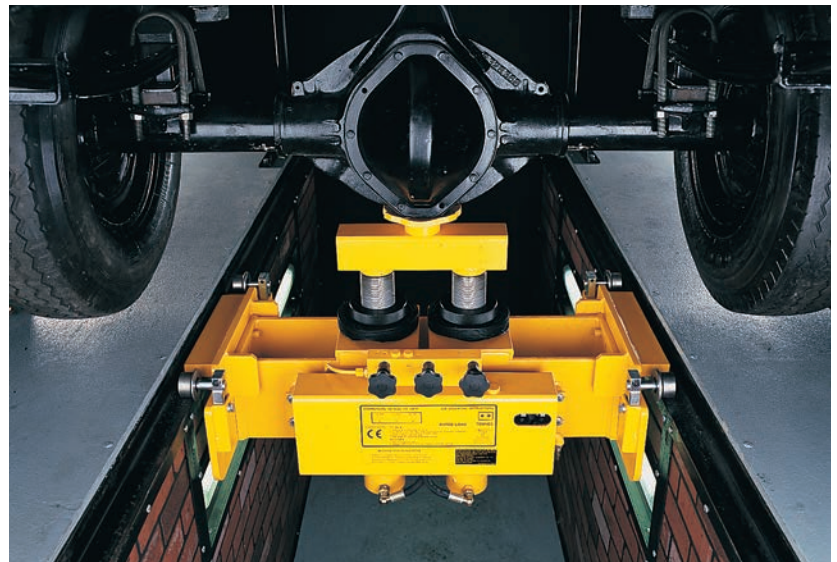
SPREADER BEAM

Designed to accommodate vehicles with independent front suspensions. When springs need to be changed the vehicle can also be jacked on the chassis leaving the axle on the ground. It also enables you to reach jacking points beyond the width of your pit. Facilitates air bag servicing. Rated up to 10 tonnes SWL. Available in 3 sizes.

4250 Spreader Beam
830mm (31") min pit width

4350 Spreader Beam
940mm (36") min pit width

4450 Spreader Beam
1030mm (42") min pit width



Most spare parts will be despatched within 24 hours. Please quote jacking beam serial no. when ordering. All spare parts for Majorlift products can be viewed on the website.

4104 Extension tubes
shoulder
Height: 100mm / 4"

4106 Extension tubes
shoulder
Height: 250mm / 10"

4107 Extension tubes
shoulder
Height: 450mm / 18"

4109 Ram end protector

DIFF BEAM

Allows use of both rams to lift maximum loads at one point. Safe working load 20 tonnes. **Part No 4500**

DOUBLE EXTENSION TOP BEAM

Enables servicing of cars and light commercials and Class 4 and 7 MOT testing.

Part No 4600



VERTICAL TRANSMISSION JACKS

**NOW
AVAILABLE
IN
1 OR 2 TONNE
VERSIONS**

**Head plate
(illustrated in blue)
is an optional extra.**

SPECIFICATIONS

- > 2 or 3 stage chrome rams give extended life
- > Castor wheels for improved manoeuvrability
- > Double acting pump on manually operated units
- > A large range of adaptor plates designed to suit most makes of gearbox is available

DIMENSIONS

1 TONNE - VTJ1000

Closed height: 1057mm
Extended height: 2013mm

2 TONNE - VTJ2000

Closed height: 1107mm
Extended height: 2129mm



Designed to provide safe and rapid replacement of vehicle transmissions by a single technician.

Now available in 1 or 2 tonne versions with the option of manual or air/hydraulic power pack. Each unit comes with a tilt turn adaptor as standard.



PIT TRANSMISSION JACKS



PTJ1000

1 tonne capacity

- > Roll along... remove... roll back... replace...
- > Specially designed for the safe removal of gearboxes
- > 3 stage ram with 926mm stroke
- > Custom built to suit any size pit
- > Manually operated double acting power pack
- > Comes complete with a tilt turn adaptor, 4 grip plates and a ratchet strap
- > Air operated version available

VTJ1000P

1 tonne capacity

- > Pit version of the vertical transmission jack
- > Manually operated double acting power pack
- > 3 stage ram with 926mm stroke
- > 2 way tilt turn adaptor
- > Suitable for pits of 800mm minimum width
- > Wheels at corners of rectangular base for increased stability
- > Air assisted power pack optional
- > Adaptor plate (illustrated in blue) is an optional extra

VTJ2000P

2 tonnes capacity

- > Spec as above except...
- > 2 stage ram with 1020mm stroke
- > Air operated version available



LOW CLEARANCE FLOOR TRANSMISSION JACK

The Majorlift FTJ1000 jack is an invaluable asset in any workshop but particularly where there is no inspection pit or if the roof clearance is low.

This equipment is well proven, having been part of our product range since 2001, but has been updated over the years to comply with the latest safety standards.

SAFETY

The adjustable lifting head tilts through a 25 degree arc, thus enabling precise positioning and safe manoeuvrability by one operative.

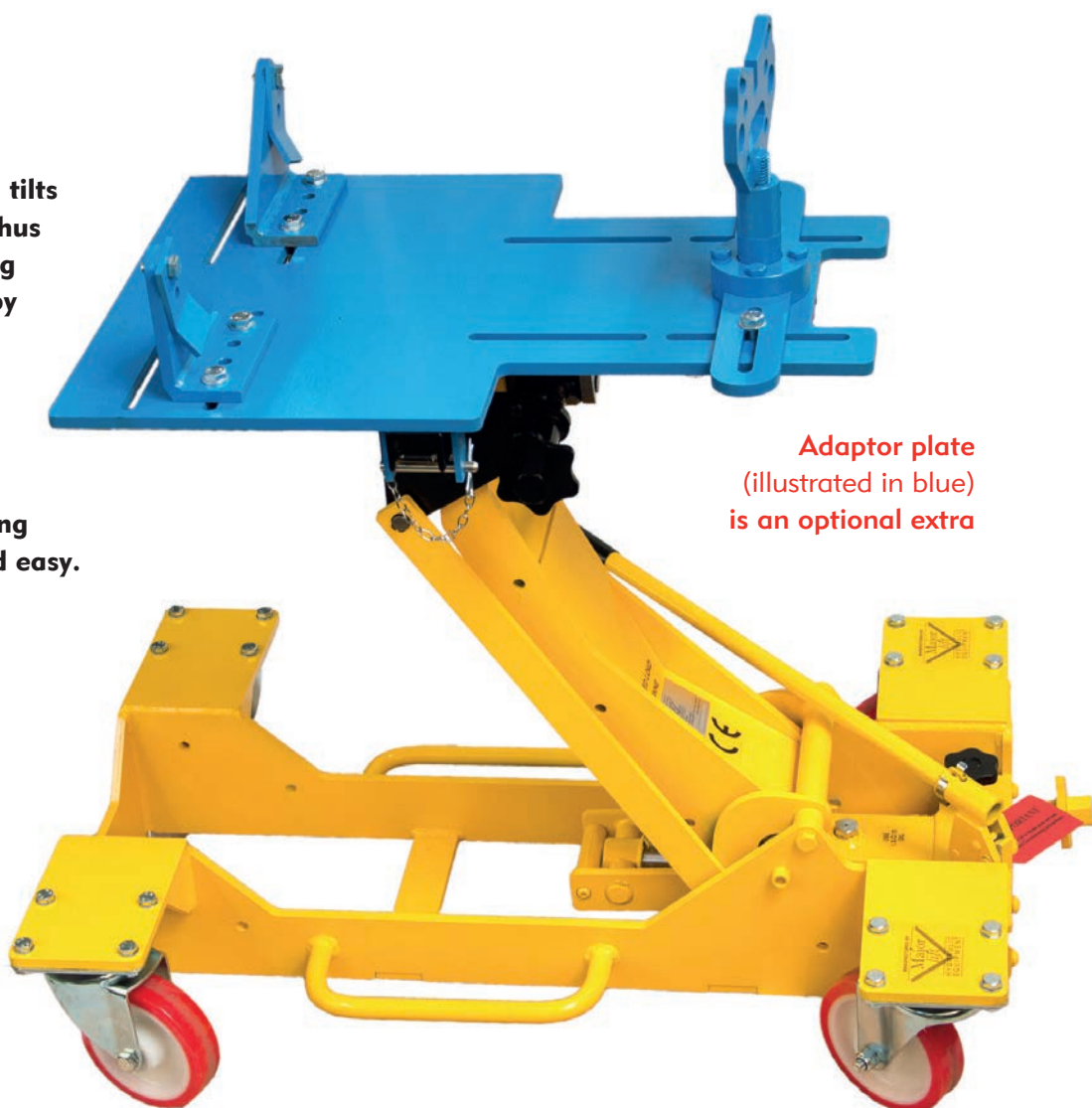
OPERATION

Operating handle will turn through 360 degrees making height adjustment safe and easy.

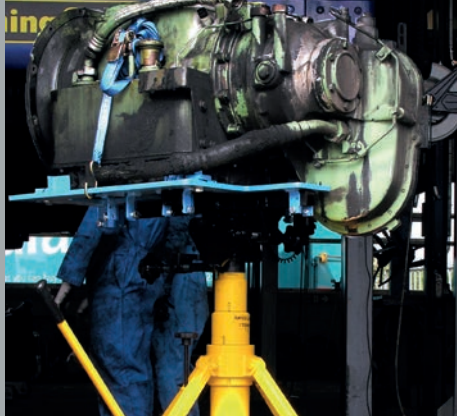
ROBUST CONSTRUCTION

Designed to support a weight of 1 tonne on any of the 4 load points. Large 150 mm diameter heavy duty wheels make movement across the workshop floor smooth and easy.

A VERSATILE
AND INDISPENSABLE
TOOL WHEN
REMOVING OR FITTING
PROP SHAFTS AND
GEARBOXES



Adaptor plate
(illustrated in blue)
is an optional extra

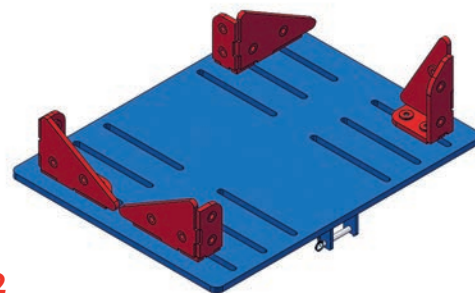


TRANSMISSION JACK ADAPTOR PLATES

Manoeuvring heavy gearboxes and transmissions is difficult and potentially dangerous.

Majorlift's unique range of transmission jack adaptor plates are the perfect easy and safe solution.

Each unit is custom designed to provide the perfect fit for the gearbox you are working on.



9612
Universal plate

9513
DAF 75/85 Rigid vehicle
Avoids removal of cross member



9524
Brake drum hub adaptor



9514
Land Rover



9525
Scania GRS 905



9516
Voith and ZF auto bus



9527
ZF I shift adaptor



9517
Volvo FM 7 / FM 12



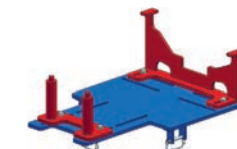
9529
Land Rover Defender
6 speed MT 82



9521
ZF Eco lite mid split adaptor



9530
ZF AS tronic adaptor



9522
Shogun adaptor



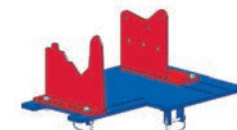
9532
Scania GR 905



9523
Scania universal pre 2007



9533
ZF AS tronic 'Lite'



If you require a plate that is not listed, please contact our drawing office who can create one especially for your application using our CAD CAM facility.



BRAKE HUB REMOVAL JACK FTJ500

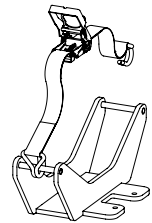
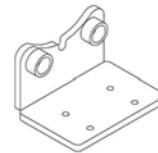
- > Packs 500kgs of lifting power, incorporating the same proven Majorlift manual power pack as its big brother the FTJ1000.
- > Fitted with 150mm heavy duty wheels that make movement around the workshop safe and easy.
- > Safe removal and replacement of wheel hubs and caliper brakes.

BRAKE CALIPER JACK MCC150

- > Used in conjunction with the hub jack it assists in the safe removal and replacement of hubs and brake calipers.
- > Also powered by Majorlift's proven hydraulics.
- > Can easily be dismantled for easy storage when not in use.

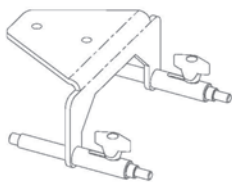


OPTIONAL ACCESSORIES

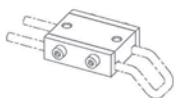


9317 Iveco 6-Stud **9319** Drum Adaptor

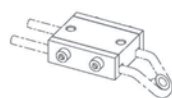
OPTIONAL EXTRAS



8816
Volvo
brake
caliper
assy



8817
Wabco
retaining
clips
adaptor



Retaining
clips
not
supplied

Brake caliper and hub removals are tricky tasks usually requiring two mechanics to complete the job safely.

With the Majorlift caliper and hub remover the job can be completed quickly and, more importantly, safely by one mechanic reducing the risk of personal injury or damage to the equipment.

View our product video at
www.youtube.com/@MajorliftHydEquip

CALIPER, HUB REMOVAL AND SEPARATOR TOOLS

NEW



The third - and newest tool in the range - is our impressive disc separator. This tool has been designed to eradicate the problems associated with separating the disc from the hub. No longer are grinders and oxy-acetylene sets required, making this once difficult and dangerous task an efficient and safe one.



DISC SEPARATOR AIR MPJ9230 MANUAL HPJ9240

- > Three powerful rams, independently controlled, on a fully adjustable frame, will fit between the disc and the hub.
- > A quick connector allows Majorlift's powerful hand pump to be quickly joined and with a few pumps of the handle, the disc and hub are easily separated.
- > 30 tonnes of pressure will make short work of even the most rusted discs.

SPECIALS

Majorlift has considerable experience in assisting customers to meet specific requirements and resolve technical issues.

AGRICULTURE

Tractors and ancillary equipment are getting heavier, so finding lifting equipment for repairs and routine maintenance is presenting a huge problem.

Majorlift have the answer. We have modified a tried and proven pit jack, giving 20 tonnes of lifting capacity, together with a complete range of lifting attachments for added safety.



RAIL

Rail maintenance is well provided for when lifting whole locos and carriages, but there is little provision for lifting equipment between 30 and 150 kgs.

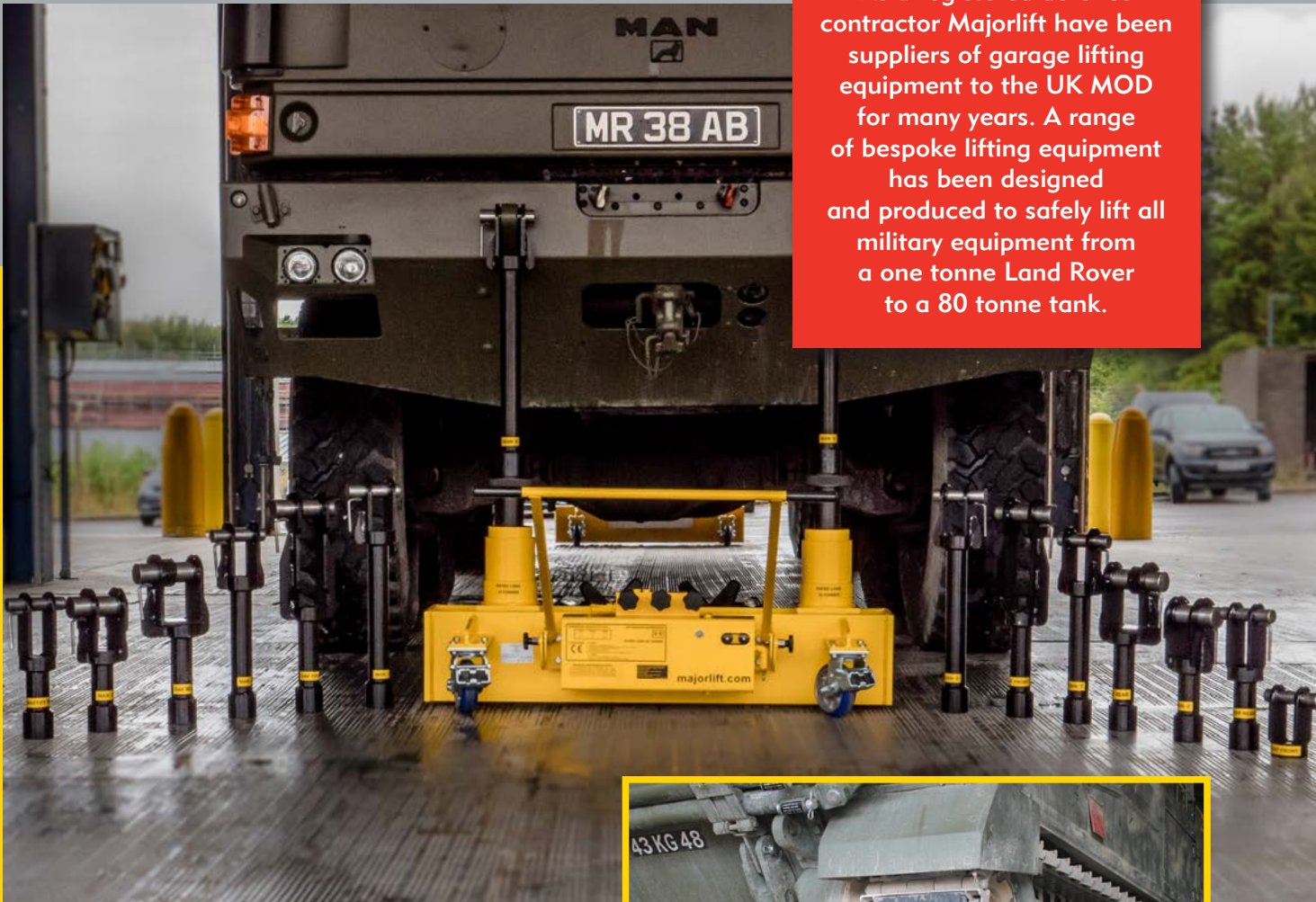
Working with several major rail workshops, Majorlift is designing and producing lifting equipment to fill this gap.

majorlift.com



MILITARY

As a registered defence contractor Majorlift have been suppliers of garage lifting equipment to the UK MOD for many years. A range of bespoke lifting equipment has been designed and produced to safely lift all military equipment from a one tonne Land Rover to a 80 tonne tank.



SKF

High pressure pumps for SKF the Swedish bearing manufacturer.



ELECTRIC VEHICLES

The future of all types of transport revolves around electric power which means heavy batteries, often weighing several tonnes, need to be lifted into position - usually in tight situations.

Majorlift have produced a prototype lifting piece of equipment and are currently working on several applications.

If you have a requirement that standard jacks cannot meet, talk to us. We'll be delighted to deliver a solution.



YOUR MAJORLIFT SERVICE OPTIONS

BREAKDOWN

We can provide a rapid replacement service for all parts of our equipment. Reconditioned service exchange units can usually be despatched the same day, therefore keeping your equipment down time to a minimum.



REPLACE AND MAINTAIN

The power pack and rams work the hardest, so they need the closest attention. We can replace these items with a factory guaranteed exchange unit that has been remanufactured and certified for a full year.

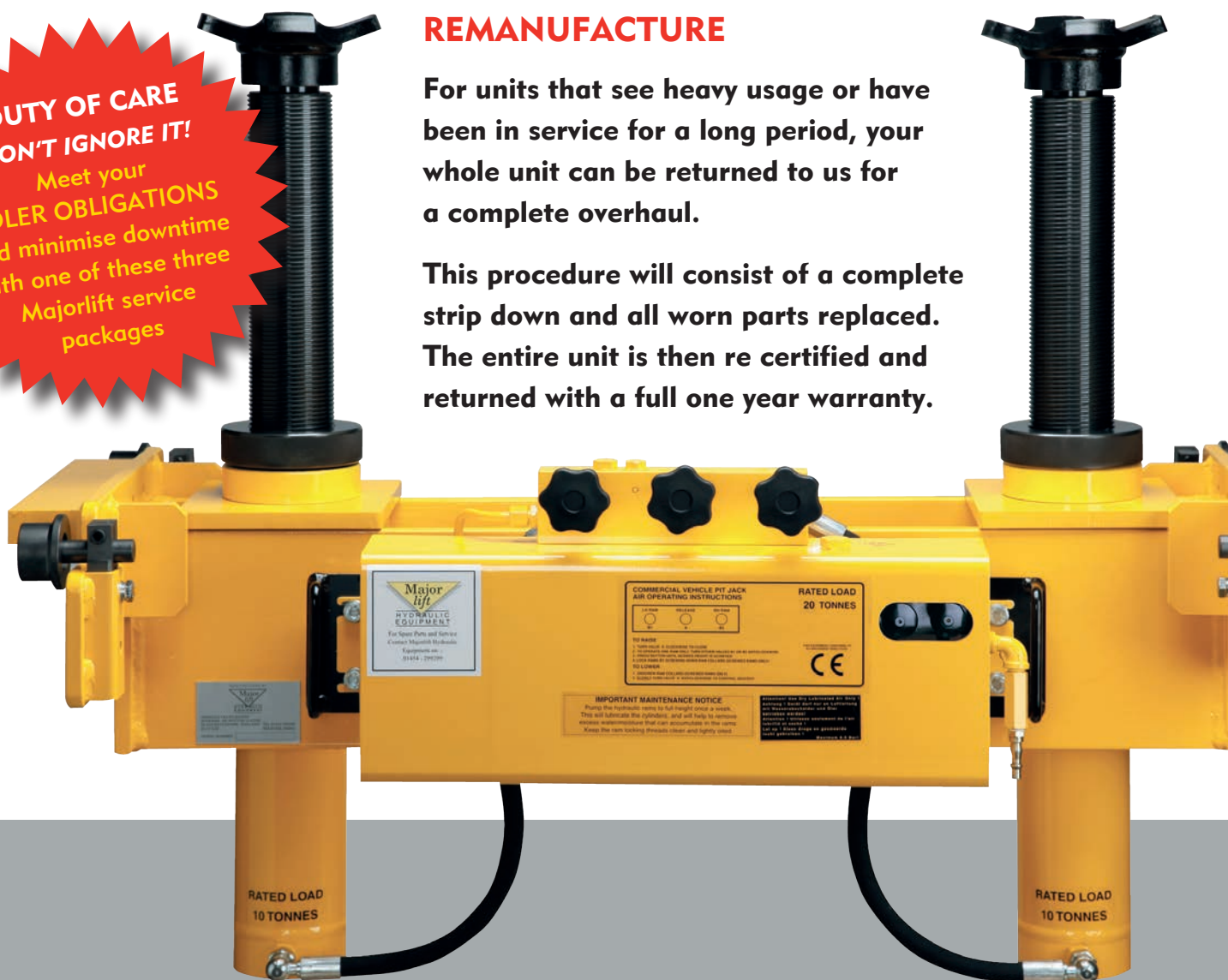


**DUTY OF CARE
DON'T IGNORE IT!**
Meet your
LOLER OBLIGATIONS
and minimise downtime
with one of these three
Majorlift service
packages

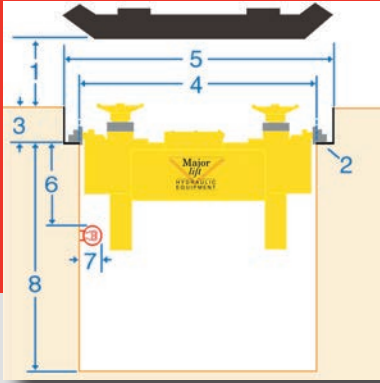
REMANUFACTURE

For units that see heavy usage or have been in service for a long period, your whole unit can be returned to us for a complete overhaul.

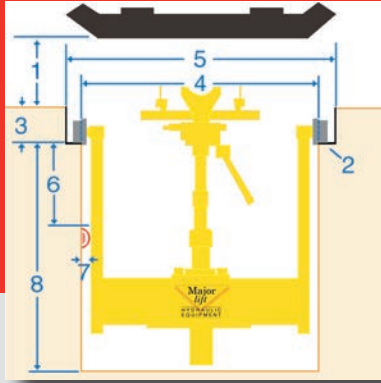
This procedure will consist of a complete strip down and all worn parts replaced. The entire unit is then re certified and returned with a full one year warranty.



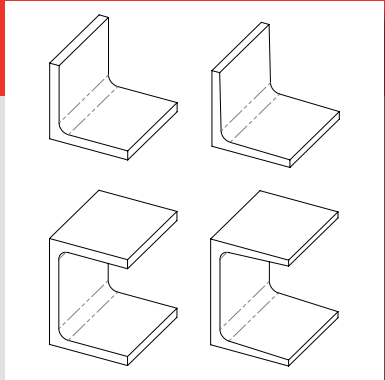
PIT SURVEY INFORMATION



PIT JACKS RATED UP TO 40 TONNES



PIT TRANSMISSION JACKS PTJ1000



PIT EDGE PROFILES

- > Minimum distance between ram centres: 180mm
- > Height from rams to rails: 426mm
- > Height from rails to top of locking collar: 70mm

The information requested on this form is required to enable Majorlift to supply a pit jack to you. A printable copy can be found at www.majorlift.com

Your pit jack will fit into your pit and be operational within minutes of being delivered. It will not foul on lights, air pipes or electricity supply. With your help we will get it right first time. This information must be emailed or posted as confirmation.

1. Minimum axle to ground clearance (lowest vehicle in your fleet) if less than 50mm.

2. Does your pit have angle or channel sections? **Please tick one box.** Angle Channel
 Is the surface where the wheels run flat or tapered? **Please tick one box.** Flat Tapered

3. Measurement of the depth of angle or channel section from the workshop floor.

4. Width of pit - check this along the length of your pit between pit rails at 1 metre intervals.
 Narrowest Widest

5. Width inside vertical flanges of the pit rails at 1 metre intervals.
 Narrowest Widest

6. Distance to the top of any lights, air or electricity supply that intrude into the pit.
 (left is your left when facing the operating controls of a pit jack)
 Left side Right side

7. Distance from pit wall that any lights, air or electricity supply intrude into the pit.
 (left is your left when facing the operating controls of a pit jack)
 Left side Right side

8. Depth of pit. Applicable to PTJ1000 only.

9. Please advise of any additional information that you think is relevant.

QUESTIONS If you have any questions on the measurements required please contact our sales or technical departments on 01454 299299

View our product video at www.youtube.com/@MajorliftHydEquip



Made by Compac.

Supported by Majorlift.

Distributed by your equipment supplier.

The Majorlift range of garage equipment is complimented by Compac, a Danish manufacturer with a reputation for quality products.

Majorlift is the sole distributor, for UK and Ireland, of Compac equipment, so when you purchase a Compac product you get the best of both worlds... A superior product backed by Majorlift's second to none service support.



WORKSHOP PRESSES

Rated 16 to 100 tonnes



TROLLEY JACKS

3 to 15 tonne capacity



WHEEL DOLLYS

Ideal for safe handling of heavy wheels and tyres



AIR JACKS

16 to 58 tonne capacity



BOTTLE JACKS

3 to 50 tonne capacity



AXLE STANDS

2 to 12 tonne capacity

3 YEAR WARRANTY...

The complete Compac 3 year warranty conditions are available for you to read on www.compac.dk



MAJORLIFT HYDRAULIC EQUIPMENT LTD.

Arnolds Field Estate, Wickwar, Wotton-Under-Edge
Gloucestershire GL12 8JD, GB
T (+44) 01454 299299
E sales@majorlift.com
www.majorlift.com

SOUTH AFRICA

Garage Equipment Service (Pty) Ltd
T +27 11 402 627 E sales@ges.co.za

KWAZULU NATAL

T +27 31 301 5861 F +27 31 306 4624

CAPE TOWN

T +27 21 905 6366 F +27 21 905 6216

SULTANATE OF OMAN

International Automobiles and Parts Company
T 968 2456 2752 E autonet@omantel.net.com
International Heavy Equipment LLC
T 968 9950 0798 E khalifa@ihe-oman.com

NETHERLANDS

V L Test Solutions BV
T +31 (0)348 477 000 E sales@vltest.com

POLAND

Phu Heka
T +48 601 21 33 88 E heka@supermedia.pl

NEW ZEALAND

Sulco Limited
T 09 250 3560 E sale@sulco.co.nz

AUSTRALIA

Hartex Engineering Pty Ltd
T +61 2 9069 2322 F +61 2 9604 5804

UNITED STATES OF AMERICA

Ari-Hetra
T +1 800 562 3250 E info@ari-hetra.com

FRANCE

Xpertive
T +33 6 95 77 45 96 E contact@xpertive.com

Distributor & Agents for Majorlift and Compac Equipment

12 MONTHS WARRANTY ON EXPORTS

