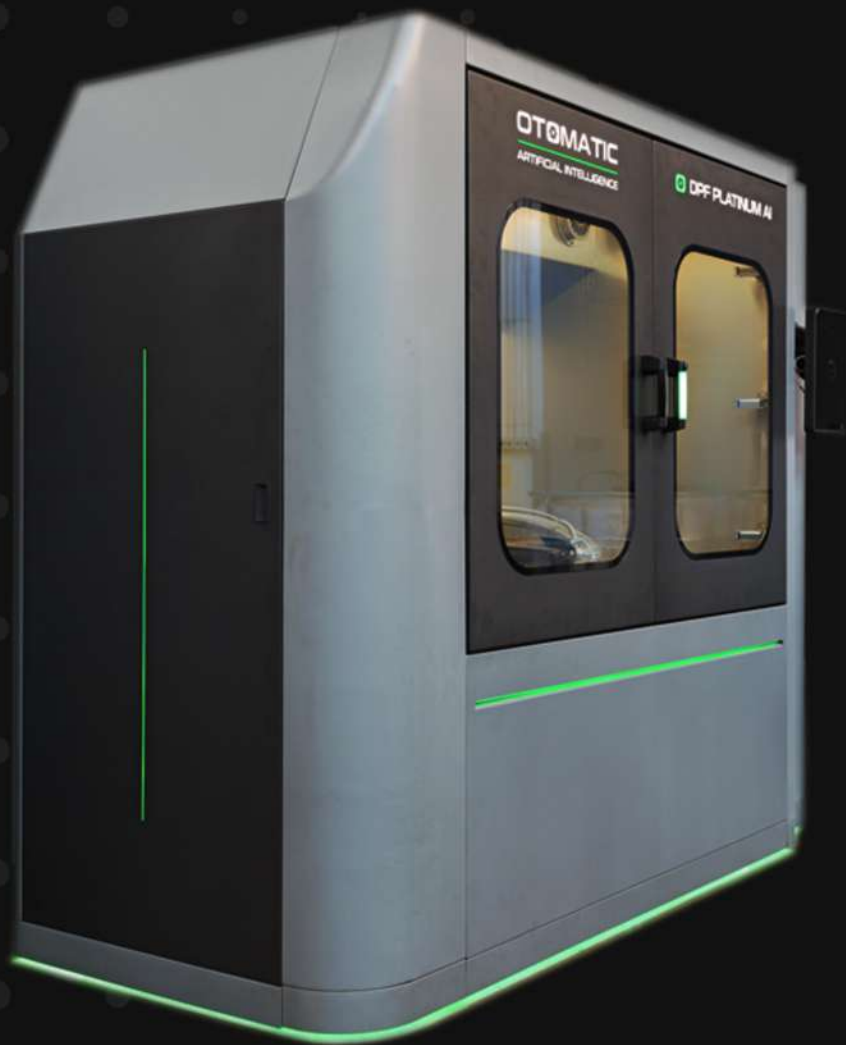




DPF/FAP/EURO 6 CLEANING MACHINES

TECHNICAL SPECIFICATIONS
AND ALL THE DETAILS





OTOMATIC specialises in the manufacture of DPF cleaning machines.

We currently ship our products to over 30 countries on five continents.

Company video presentation:

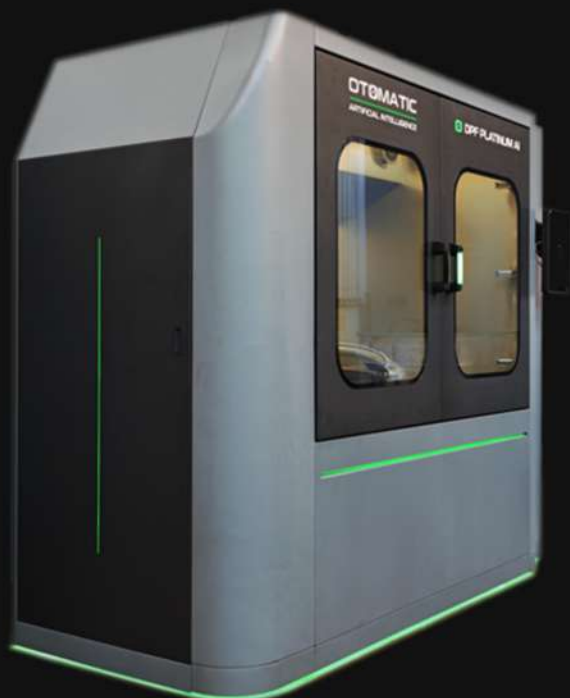
<https://www.youtube.com/watch?v=CKb9wnki3wQ>

OTOMATIC develops innovative solutions for DPF cleaning.

We are proud of our latest innovative products: the chamber pressure adapter for cleaning EURO 6 filters from trucks launched in 2021, and the DPF-hybrid™ cleaning method launched in the second half of 2022.



DPF PLATINUM AI



Product description:

DPF Platinum (AI) provides a maintenance-free cleaning process. The operator's role is limited only to installing the DPF in the machine cab and pressing the START button.

Machine equipped with a proprietary artificial intelligence algorithm - DPF AI SmartClean™.

Application:

DPF / FAP / GPF / DOC and SCR catalytic converters - AdBlue from cars, vans, trucks, buses, agricultural machinery, forklift trucks

Functions :

- testing
- dry cleaning (1st cleaning stage)
- wet cleaning (2nd cleaning stage)
- dry cleaning (3rd cleaning stage)
- printing reports

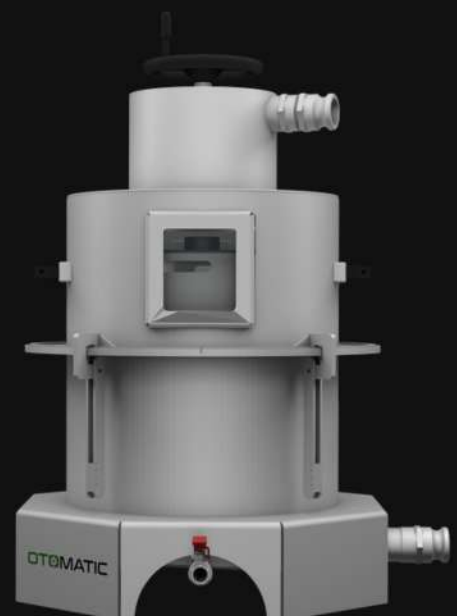
EXTERNAL DIMENSIONS	2400 X 2800 x 1100
WORKSPACE	1320 X 1860 X 1040
WORKTOP LOAD CAPACITY	300 kg
WEIGHT	1080 kg
WEIGHT OF THE WHOLE SET (MACHINE +ACCESSORIES)	1200 kg

Price: 46 000 EUR

Video here: <https://www.youtube.com/watch?v=5PvKlVnRaAs>

WORK IN CLOSED CIRCUIT	YES
PERMANENT ACCESS TO WATER	NO
POWER SUPPLY	THREE PHASE 400 V
WATER TANK CAPACITY	510 l
INSTALLED POWER	27kW
CONSTRUCTION	INOX + POWDER COATED STEEL
FILTRATION SYSTEM	2 x FILTERS from 3µ
FUNCTION	TESTING , CLEANING, DRYING, REPORTS PRINTING
WATER PUMP EFFICIENCY	450l/min.
WATER TEMPERATURE	60°C/80°C
WATER PUMP INVERTER	YES
FILTERS DRYING	~130°C
TESTS BEFORE AND AFTER CLEANING	BACKPRESSURE TEST (MBAR)
TOUCH SCREEN PANEL	15,6"
MACHINE OPERATION SYSTEM	EVERY LANGUAGE

WORK PROGRAM	AUTOMATIC/MANUAL
CLEANING AND DRYING TIME (passenger car)	50-60 min.
CLEANING AND DRYING TIME (trucks)	2,5-3,5 h
PRINT REPORT	COMPLETE 3 - PAGE REPORTS IN A4 FORMAT
CERTIFICATES	WE/EC , ISO 9001 (TUV NORD)
PATENT	ADAPTER EURO 6



DPF PLATINUM



Product description:

The device uses the phenomenon of turbulent water flow hydrodynamics, and the force of the compressed air pulse from the compressor. Furthermore machine works in **DPF-hybrid technology.**

In addition, during the drying process, there is a cyclic pulse of compressed air which helps to eject shrunken ash residues from the filter. It cleans particulate filters from soot, ash and oil very effectively, restoring them to near-factory condition

Application:

DPF / FAP / GPF / DOC and SCR catalytic converters - AdBlue from cars, vans, trucks, buses, agricultural machinery, forklift trucks

Functions :

- testing
- dry cleaning (1st cleaning stage)
- wet cleaning (2nd cleaning stage)
- dry cleaning (3rd cleaning stage)
- printing reports

EXTERNAL DIMENSIONS	2250 X 2600 x 1100
WORKSPACE	1320 X 1860 X 1040
WEIGHT	700kg
WEIGHT OF THE WHOLE SET (MACHINE +ACCESSORIES)	850 kg

Price: 30 000 EUR

Video here: <https://www.youtube.com/watch?v=DxrHIAb-WFc&t=10s>

WORK IN CLOSED CIRCUIT	YES
PERMANENT ACCESS TO WATER	NO
POWER SUPPLY	THREE PHASE 400 V
WATER TANK CAPACITY	510 l
INSTALLED POWER	27kW
CONSTRUCTION	INOX
FILTRATION SYSTEM	2 x FILTERS from 3µ
FUNCTION	TESTING , CLEANING, DRYING, REPORTS PRINTING
WATER PUMP EFFICIENCY	450l/min.
WATER TEMPERATURE	60°C/80°C
WATER PUMP INVERTER	YES
FILTERS DRYING	~130°C
TESTS BEFORE AND AFTER CLEANING	BACKPRESSURE TEST (MBAR)
TOUCH SCREEN PANEL	7,0"
MACHINE OPERATION SYSTEM	EVERY LANGUAGE

FILTER ATTACHMENT - PASSENGER CAR: PNEUMATIC QUICK- RELEASE FASTENER	(AVERAGE FILTER FASTENING TIME <10 SECONDS)
WORK PROGRAM	AUTOMATIC/MANUAL
CLEANING AND DRYING TIME (passenger car)	50-60 min.
CLEANING AND DRYING TIME (trucks)	2,5-3,5 h
PRINT REPORT	TICKET
CERTIFICATES	WE/EC , ISO 9001 (TUV NORD)
PATENT	ADAPTER EURO 6



DPF PLATINUM MATIC



Product description:

The device uses the phenomenon of turbulent water flow hydrodynamics, and the force of the compressed air pulse from the compressor. Furthermore machine works in **DPF-hybrid technology.**

In addition, during the drying process, there is a cyclic pulse of compressed air which helps to eject shrunken ash residues from the filter. It cleans particulate filters from soot, ash and oil very effectively, restoring them to near-factory condition

Application:

DPF / FAP / GPF from cars, vans, light trucks up to 3,5 t

Functions :

- testing
- dry cleaning (1st cleaning stage)
- wet cleaning (2nd cleaning stage)
- dry cleaning (3rd cleaning stage)
- printing reports

EXTERNAL DIMENSIONS	2400 X 1850 x 1100
WEIGHT	450 kg
WEIGHT OF THE WHOLE SET (MACHINE +ACCESSORIES)	500 kg

Price: 22 000 EUR

WORK IN CLOSED CIRCUIT	YES
PERMANENT ACCESS TO WATER	NO
POWER SUPPLY	THREE PHASE 400 V
WATER TANK CAPACITY	200 l
INSTALLED POWER	27kW
CONSTRUCTION	INOX
FILTRATION SYSTEM	1 x FILTER from 3μ
FUNCTION	TESTING , CLEANING, DRYING, REPORTS PRINTING
WATER PUMP EFFICIENCY	250L/MIN.
WATER TEMPERATURE	60°C/80°C
WATER PUMP INVERTER	YES
FILTERS DRYING	~130°C
TESTS BEFORE AND AFTER CLEANING	BACKPRESSURE TEST (MBAR)
TOUCH SCREEN PANEL	7,0"
MACHINE OPERATION SYSTEM	EVERY LANGUAGE

FILTER ATTACHMENT - PASSENGER CAR: PNEUMATIC QUICK- RELEASE FASTENER	(AVERAGE FILTER FASTENING TIME <10 SECONDS)
WORK PROGRAM	AUTOMATIC/MANUAL
CLEANING AND DRYING TIME (passenger car)	50-60 min.
PRINT REPORT	TICKET
CERTIFICATES	WE/EC , ISO 9001 (TUV NORD)





In 2022, Otomatic introduced the option to configure and add special features that support the DPF filter cleaning process. The DPF Platinum (AI) machine comes equipped with an automatic detergent dispenser and oil remover as standard features.

However, the DPF Platinum and DPF Platinum Matic machines can be configured according to one's own discretion for an additional fee.

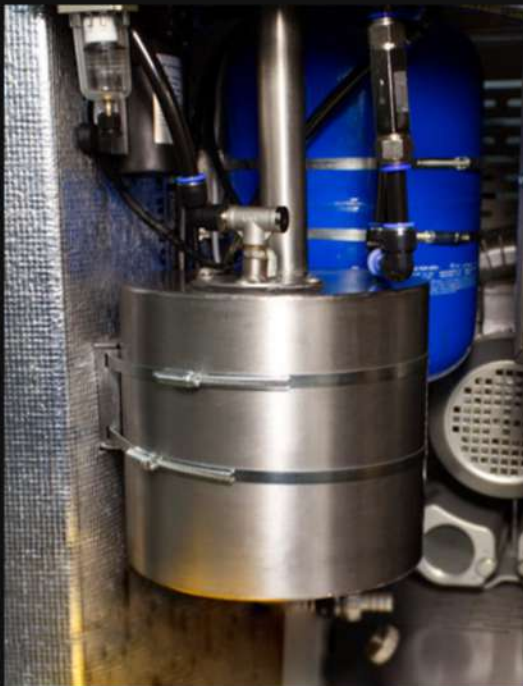
The oil separator is an additional feature of the DPF-Hybrid technology machines. In the process of cleaning diesel particulate filters (DPFs), oil from the DPF filters is removed, which most commonly appears in the filters due to turbocharger failures.

Oil residues often appear on the surface of the water tank and form a dense suspension that needs to be manually removed in case of accumulation. The built-in oil separator in the DPF machine ensures that this part of the machine maintenance does not cause much trouble.



Video here: <https://www.youtube.com/shorts/n-kpzVAnrCU?feature=share>

Price: 1800 EUR



The automatic detergent dispenser is a feature designed to simplify the cleaning process in DPF machines. Traditionally, it is accepted to add 200 ml of cleaning fluid concentrate to the machine's tank for each DPF filter before cleaning, which typically involves manual allocation of the detergent. Aiming to facilitate this process, Otomatic introduced an automatic detergent dosing function during the wet cleaning process without the operator's intervention.

Price: 1800 EUR

Video here: <https://www.youtube.com/shorts/h7ubnrC79jM?feature=share>

The Cleaning Accessory Kit comprises latex gloves integrated into the machine's cabin door, allowing for direct manual intervention inside the cabin without the risk of splashing or contact with detergent. Inside the cabin, there's a compressed air gun and a high-pressure cleaning liquid dispenser for removing debris from the steel filter housing. The compressed air gun is often used to eliminate excess water from the filter channels before the drying process, significantly reducing drying time. These built-in gloves enable operators to securely close the machine's door and still maneuver their hands inside the cabin, ensuring a safer and cleaner working environment.



Price: 1000 EUR

ALL STAGES OF DPF/FAP CLEANING IN ONE SINGLE UNIT MACHINE.



TURBO AIR PULSE

Stage 1 Dry - Pneumatic Cleaning

Loose soot and ash combined with water creates sludge inside the filter, creating a larger pressure barrier, which can break the DPF ceramic monolith.

The Turbo Air Pulse program prepares the DPF for the next step of flushing ash and soot out of the channels with a water solution finding the "easy" path through the filter porous walls.



WATER

Stage 2 Wet Cleaning

Flows easily through the filter brick (monolith) through its unobstructed outlet channels and then penetrates the microscopic porous walls dividing the monolith channels to wash dirty inlet channels.

Its formula softens highly compressed and adhered particulates in both the filter's inlet channels and its microporous walls.

Carefully selected surfactants reduce the surface tension of the aqueous solution, leading to better effectiveness of the fluid in penetrating the filter's micropores. Thanks to the power of hydrodynamic washing, all the impurities are detached from the cleaned surface.

Due to the appropriate viscosity of the fluid, the movement of the fluid molecules is similar to friction.



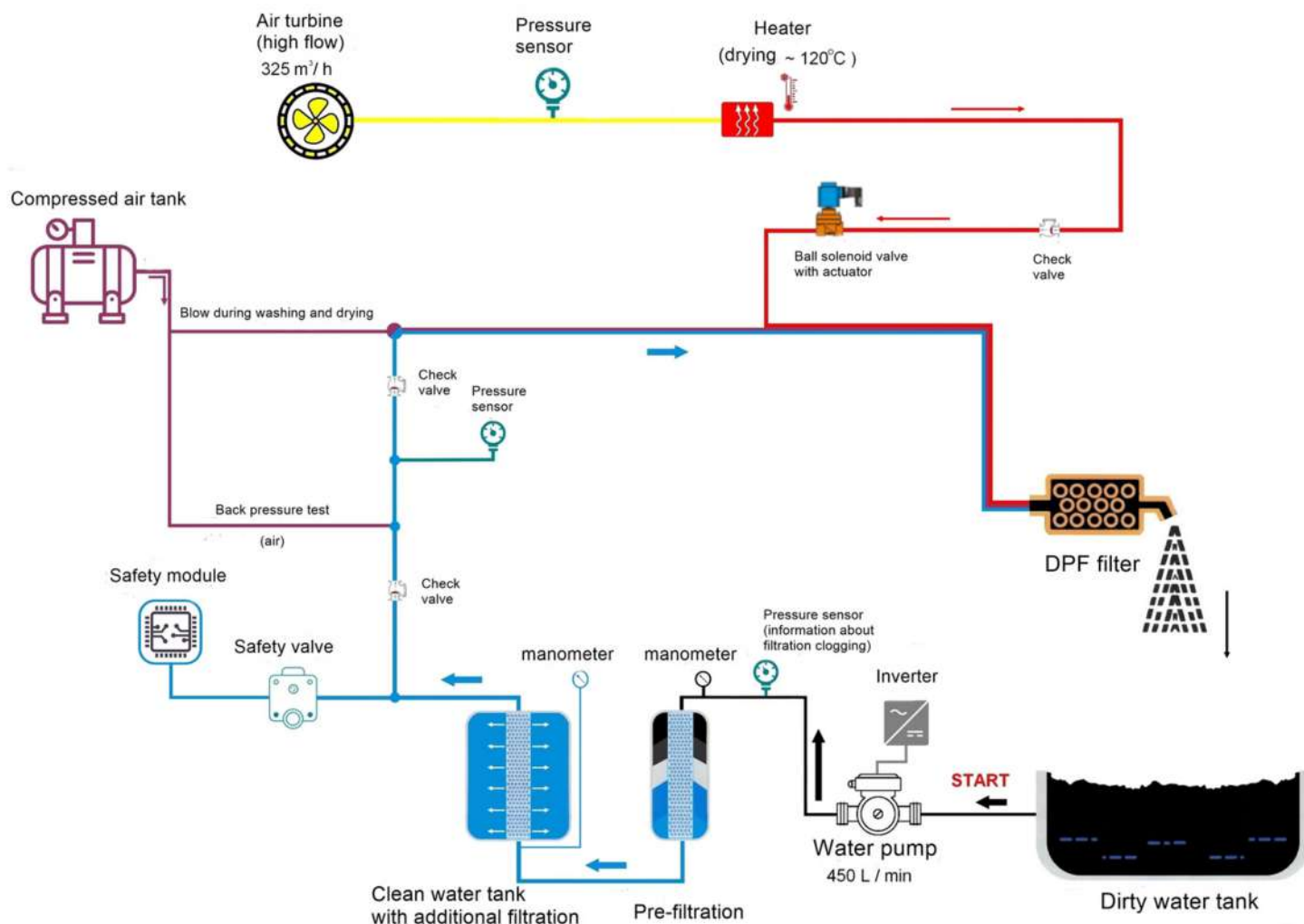
HOT AIRFLOW & HIGH PRESSURE

Stage 3 Hot „Air Pulse“ Cleaning

Complete removal of remaining sludge from inside the DPF filter [created with loose soot and ash when combined with water] thanks to patented "air pulse drying process".

No risk of dirty rinse water evaporation and accumulation of the remaining dirt particles in the filter cleaned channels.

If ash and soot particles are not removed sufficiently during the wet cleaning, these residues are blown outside the filter channels in the form of shrunken, dried particles.



SYSTEMS AND SOLUTIONS TO MAKE WORK EASIER

SMART CLEAN (AI)	The system, based on artificial intelligence, supervises the entire operation, independently adjusting the parameters, the number of cleaning cycles to the specific filter if necessary, shortening or lengthening the process. It ensures almost maintenance-free operation.
WET & DRY TECH.	Wet and dry cleaning. Increases the efficiency of the entire process and speeds up filter drying time.
AQUA SAFE	<p>Energy-efficient ceramic heater system in the hot channels. No direct contact between the heaters and the water solution in the tank, so they are not exposed to external influences, including the degrading effect of the cleaning solution.</p> <p>The solution allows easier cleaning of the tank chamber, and there is no need to replace the water in case of failure.</p>
DE-OILER	It facilitates the separation of oil from the working fluid, regardless of the water level in the tank. In addition, increases the service life of the process media while reducing operating costs. An environmentally friendly and cost-effective solution, it provides cleaning convenience and does not require frequent water changes.
AUTOMATIC DETERGENT DISPENSER	It provides completely impersonal operation. The machine operator no longer needs to remember to pour liquid into the dpf before washing. Precise dosing of the detergent, in short intervals directly into the filter during the entire cleaning cycle, increases the efficiency of the cleaning process.
BOTH SIDE FASTENING	Bi-directional washing and drying without rotating the filter in the cabin. Process controlled by electro-valves.
ADAPTER EURO 6	<p>The closed circulation of the cleaning agent in the pressure chamber ensures complete and even cleaning of all filter channels. In addition, a thermo-circulating effect is achieved when drying with hot air, instead of spot drying. Benefits:</p> <ul style="list-style-type: none"> • one adapter for all types of Euro 6 DPF filters from heavy-duty vehicles • uniform cleaning of all ceramic filter insert channels • fold reduction in drying time of the filter after cleaning, thanks to thermoblocking • two-way cleaning and drying process • increased competitiveness in relation to users of conventional adapters

ACCESSORIES

With each machine purchase, you receive a complete set of accessories necessary for daily work in a DPF service. This includes connection adapters, rubber sleeves, detergent, rubber hoses, and filtration cartridges. Otomatic has introduced an online store where purchases can be made with worldwide shipping available.



REQUIREMENTS FOR THE CORRECT INSTALLATION OF THE MACHINES:

A) WORKSPACE

- Approx 30 m2 with ventilation

B) TECH REQUIREMENTS

- Three-phase 400 V AC supply L1, L2, L3, N, PE (32 A 5P socket required)
- Rated power of the unit 27 KW
- Power consumption when heating [tank A and B] 18KW, 25A
- Power consumption during drying 5.5 KW, 9A
- Minimum protection S303 C25
- Compressed air (10 bar), min. hose diameter. 14 mm
- Permanent connection to mains water and sewerage not required
- Ventilation line (recommended)

More information: <https://otomatic.eu>

Meta (Facebook): <https://www.facebook.com/OtomaticDPF>

- Price does not include transport and additional charges.
- All prices quoted are net prices.

ORDER AND PAYMENT LEAD TIMES

All DPF machines are made to order for each customer. The average waiting time is 6 - 8 weeks. We start the order after receiving a 10% deposit from the customer. The rest 90% of the payment is due before the delivery of the machine. Payment for the entire order must be credited to your OTOMATIC account before shipment.

DPF MACHINE OPERATION TRAINING

Otomatic, with its years of experience in running its own DPF cleaning service, has amassed extensive knowledge in the operation of DPF machines and the management of a cleaning service. The company recognizes the importance of proper technical and substantive training for those operating these devices and managing a DPF cleaning service. Therefore, Otomatic offers each customer complimentary training, which can take place either directly at the company's headquarters or via video conference. This approach ensures that the training format can be tailored to the individual needs and capabilities of customers, while guaranteeing access to valuable information and practical tips related to the use of DPF machines.

SERVICE AND WARRANTY

Every DPF machine sold is covered by a warranty. Machines utilizing DPF-Hybrid technology come with a 24-month warranty. The majority of service repairs involve straightforward parts replacements that do not require specialized knowledge. Otomatic maintains a stock of spare parts, ensuring shipments within 24 hours. Many service issues are resolved remotely via WhatsApp communicator. For situations that require specialized expertise on-site, Otomatic dispatches technicians who collaborate with the company on a cooperative basis.



OTOMATIC SMOLEC I WRONKA SP.J.



ul. Krakowska 83C,
34-120 Andrychów, Poland



+48 728 411 962
grzegorz.gurdek@otomatic.pl



+48 787 976 834
michal.rzeczycki@otomatic.pl



www.otomatic.eu

